



Insurance and Billing Guide

Brunswick Urgent Care gladly accepts personal checks, Visa, MasterCard, Discover, American Express and money orders.

As an added convenience, we accept and participate with most major insurances including, but not limited to, the following:

BCBS OF NC

MEDICARE

MEDICAID

UNITED HEALTHCARE

MEDCOST

CIGNA HEALTHCARE

Workman's Compensation Claim?

Please make sure patient provides billing information.

Should you have any questions regarding our insurance or billing policies, please give us a call at

910-383-2182.

NO APPOINTMENT NEEDED!



Open Seven Days A Week!

Adult and Pediatric Care

On-site X-ray

Sprains and Fractures

Sudden Illness

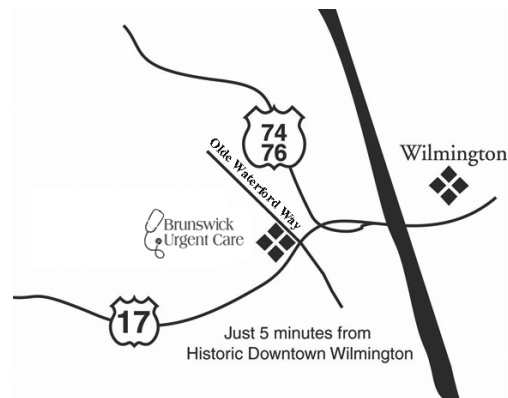
Occupational Medicine

Workman's Compensation

DOT and Sports Physicals

We accept most insurance plans including Medicare and Medicaid

509 Olde Waterford Way Suite 101
Leland NC 28451



Welcome to



“Your seven day-a-week medical center”



509 Olde Waterford Way, Suite 101
Leland, NC 28451

910.383.2182


fax: 910.383.2184

www.brunswickurgentcare.com

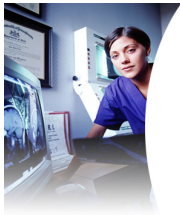
Mon – Sat. 8:00 a.m. – 8:00 p.m.
Sunday 9:00 p.m. – 3:00 p.m.

910-383-2182

NO APPOINTMENT NEEDED!

At,  we are pleased to offer the most comprehensive menu of services available anywhere in the greater Leland area. We offer **seven day-a-week** Urgent Care, Occupational (Corporate) Medicine, and On-Site Radiology services.

Conveniently located in the Waterford of the Carolinas off Hwy 17 South, Brunswick Urgent Care offers ample front door parking.



Why go to an Urgent Care?

Brunswick Urgent Care appreciates the difficulties that many of our residents and visitors have in accessing convenient, quality care for acute illnesses and injuries. Brunswick Urgent Care provides this care, with convenient **EVENING AND WEEKEND HOURS** at our facility and **NO APPOINTMENT NECESSARY** and **MINIMAL WAITING TIMES**. From pediatrics to geriatrics - from sprains & strains to earaches & fevers, Brunswick Urgent Care specializes in convenient, high-quality evaluation and treatment of most non-life threatening conditions. Just walk-in to our clinic during our convenient hours, and we'll take care of you!

Services Summary



Urgent Care

On-site X-ray

Lacerations and Burns

Sprains and Fractures

Sports Injuries

Sudden Illness

Asthma and Allergy



Adult & Pediatric Care

Athletic and School Physicals

Flu shots (when available)

Pregnancy Testing

On-Site Lab

DOT Physicals

Occupational Medicine

Call us for a customized proposal.


Back To Business

At Brunswick Urgent Care, we know that your relationship with your primary care physician is important. When you require after-hours care, or cannot obtain a same-day appointment with your physician of choice, we are here for you.

So as to keep your medical records up-to-date, per your approval we will report back to your physician regarding the outcome of your visit.



Corporate Care

At , we understand that businesses need what busy individuals need - access to fast, efficient medical care so that their employees can **GET BACK TO WORK AND GET BACK TO THEIR LIVES**. **Brunswick Urgent Care** offers a variety of Occupational Medicine Services to assist companies to run at peak performance. We provide pre-employment and DOT physicals, drug testing/screening and work-related injury assessment and treatment ("Worker's Comp"). We carefully balance the needs of the individual employee with that of the company/employer to achieve the best results and encourage people to get back to work as soon as possible.